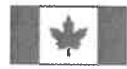


Qu TRUCK BODIES

Owner's Manual

Proudly built in Canada



Models

G3-6

G3-8

www.qutruckbodies.com

Read and understand all sections of this manual prior to installing or operating your Qu Truck Bodies dump insert. This manual contains information for the installation, operation and maintenance of the QC Truck Bodies G3-6, G3-8, dump inserts. Proper care and operation of the unit will assure years of dependable service. Qu Truck Bodies will be glad to answer any of your questions that you have at www.qutruckbodies.com .

Dumper Serial Number: _____

Date of Purchase: _____

Purchased From: _____

Safety Information

Observe the following safety procedures during the use of the dumper: Before operating read and understand all information furnished with your dumper and in this manual.

- ✓ Keep hands, feet and clothing away from moving parts.
- ✓ Never exceed the structural capacity (5000 lbs.) of the dumper. Structural capacity means the maximum weight the dumper will carry and dump with an acceptable margin of safety. This does not mean that your truck can carry the weight.
- ✓ Never exceed the manufacturer's Gross vehicle Weight Rating of your truck. This rating can usually be found on the end of the driver's door just above or below the latch.
- ✓ Always keep as much of the load as possible forward of the rear axle and evenly distributed from side to side.
- ✓ Never work under a raised dump body unless the body is supported by blocking or propped in the raised position. Always unload prior to using the prop.
- ✓ Always open the tailgate prior to raising the dumper when it is loaded.
- ✓ Before raising the dumper, check for adequate overhead clearance. Be alert for overhead electrical wires.
- ✓ Never close off the cab guard window screen when the bed is empty if your dumper is so equipped. High winds at high driving speed may cause the bed to raise.

Mounting & Operation Instructions

CAUTION: Do not work under the dumper without having the safety prop properly positioned.

1. Remove your original tailgate from your pickup truck.
2. Drill a 5/8" diameter hole down through the pickup bed floor 1-1/4" forward of the rear edge and on the center line of the bed. See hole "A" on Figure 2.
3. Center the bed from side to side at the front.
4. **Option #1** Using heavy ratchet straps secure each side of the frame to the front tie down eyes on the pickup box. See Figure 2.
5. **Option #2** There are additional 5/8" holes allowed to bolt the front of the frame to the pickup box if you so desire, always check for obstructions underneath the pickup truck to avoid damaging anything. (Check with your local ministry of transportation if you are unsure of rules regarding fixing the dump insert to your pickup truck).
6. The hydraulic pump reservoir has been filled at the factory. **Caution:** Do not overfill. Adding too much fluid will cause the reservoir to overflow when the bed is lowered. The best method of refilling the reservoir is to place the dumper on the safety prop, with the prop being as straight up and down as possible under the dumper. A method of filling is to add 2-3 oz of fluid at a time and raise the bed. Repeat this procedure until the pump does not change sound (from pumping air) at the end of its stroke. Adding too much fluid will result in the reservoir overflowing when the bed is lowered.
7. The Insert Dumper has been designed for use with most pickup trucks with a 6 ft. and 8 ft. bed. **Never exceed the manufacturer's gross vehicle rating of the truck.** These ratings can usually be found on the end of door just above or below the latch on the driver's side. Filling the bed with materials such as sand, stone, scrap steel, etc.

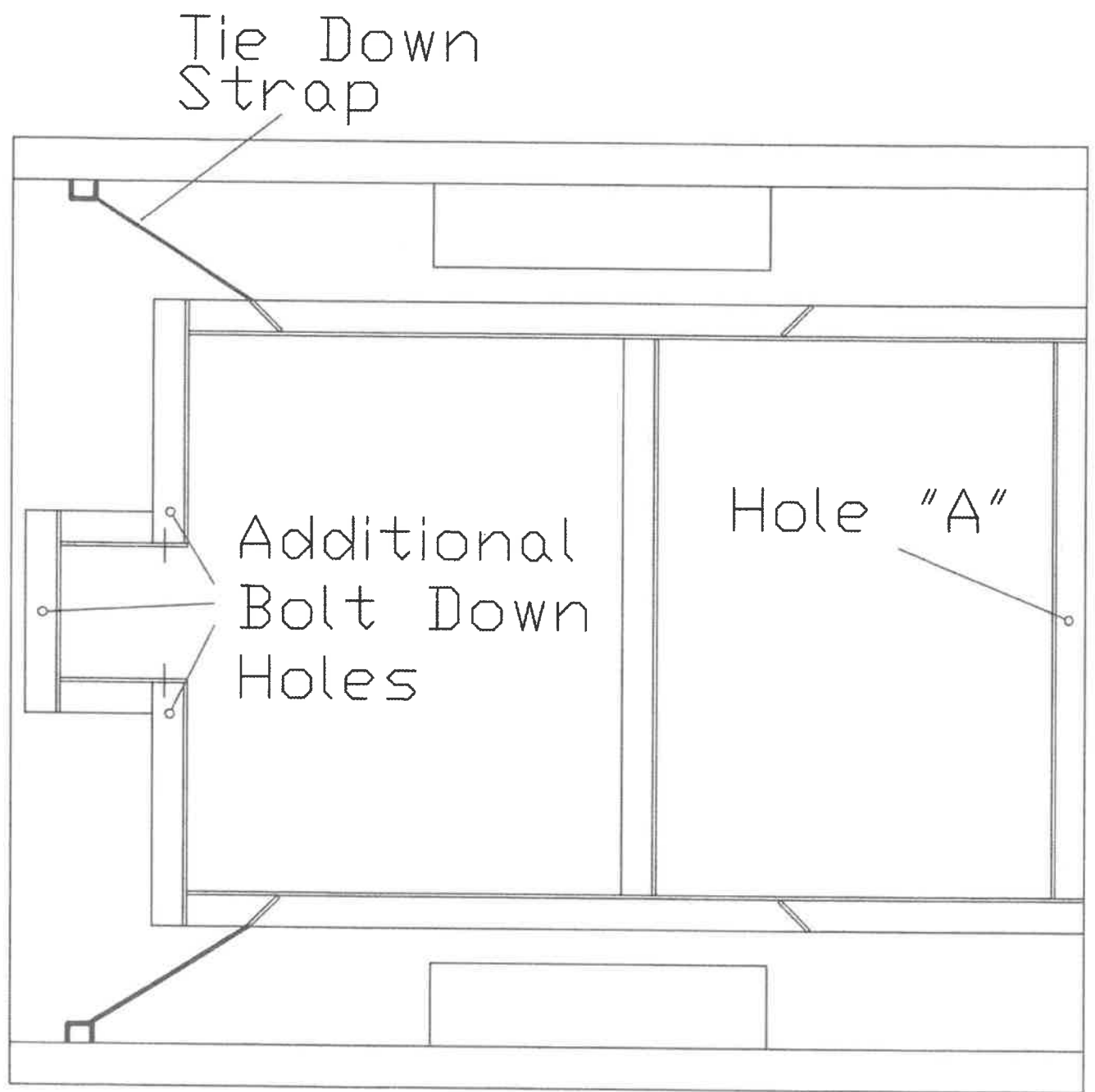


Figure 2

Maintenance

1. Lubricate the tailgate pins periodically with WD-40.
2. Grease the 1" pins on the scissor mechanism periodically
3. Depending on frequency of use, check all bolts for proper tightness and torque.
4. If hydraulic pump won't operate check electrical connections.
5. If hydraulic pump is sluggish, check your battery charge.

Parts List

Qu419100	insert body
Qu419101	insert 3/16" floor
Qu419102	tailgate
Qu419103	cab protector
Qu419104	left side board expander
Qu419105	right side board expander
Qu419106	left side board L bracket
Qu419107	right side board L bracket
Qu419108	wheel barrow door
Qu419109	5/8" locking pins
Qu419110	left top side rail (checkered plate)
Qu419111	right top side rail (checkered plate)
Qu419112	tailgate paddle latch
Qu419113	latch cables
Qu419114	tailgate cables
Qu419115	logo plate
Qu419116	logo backing plate
Qu419117	Hydraulic Unit 12 volt
Qu419118	16-2.5 hydraulic cylinder
Qu419119	3/8" x 36" hydraulic hose
Qu419130	base frame 2.5 inch steel angle
Qu419131	lower scissor mechanism (steel)
Qu419132	upper scissor mechanism (steel)
Qu419133	steel lifting support plate
Qu419134	1 inch scissor pins
Qu419135	1 inch washers
Qu419136	cotter pin